



McLoughlin Boulevard Investments Strategy

COMMUNITY SOUNDING BOARD MEETING #2

MARCH 9, 2023

Agenda

Time	Topic	Person
6:00-6:10 p.m.	Introductions & Project Review	Sandra and Tracie
6:10-6:20 p.m.	Public Outreach Plans	Tracie
6:20-7:00 p.m.	Evaluation Criteria & Project Types	Camilla
7:00-7:50 p.m.	Project Locations	Camilla and Sandra
7:50-8:00 p.m.	Next Steps	Tracie

Introductions



Your name



The organization you're representing

PROJECT REVIEW

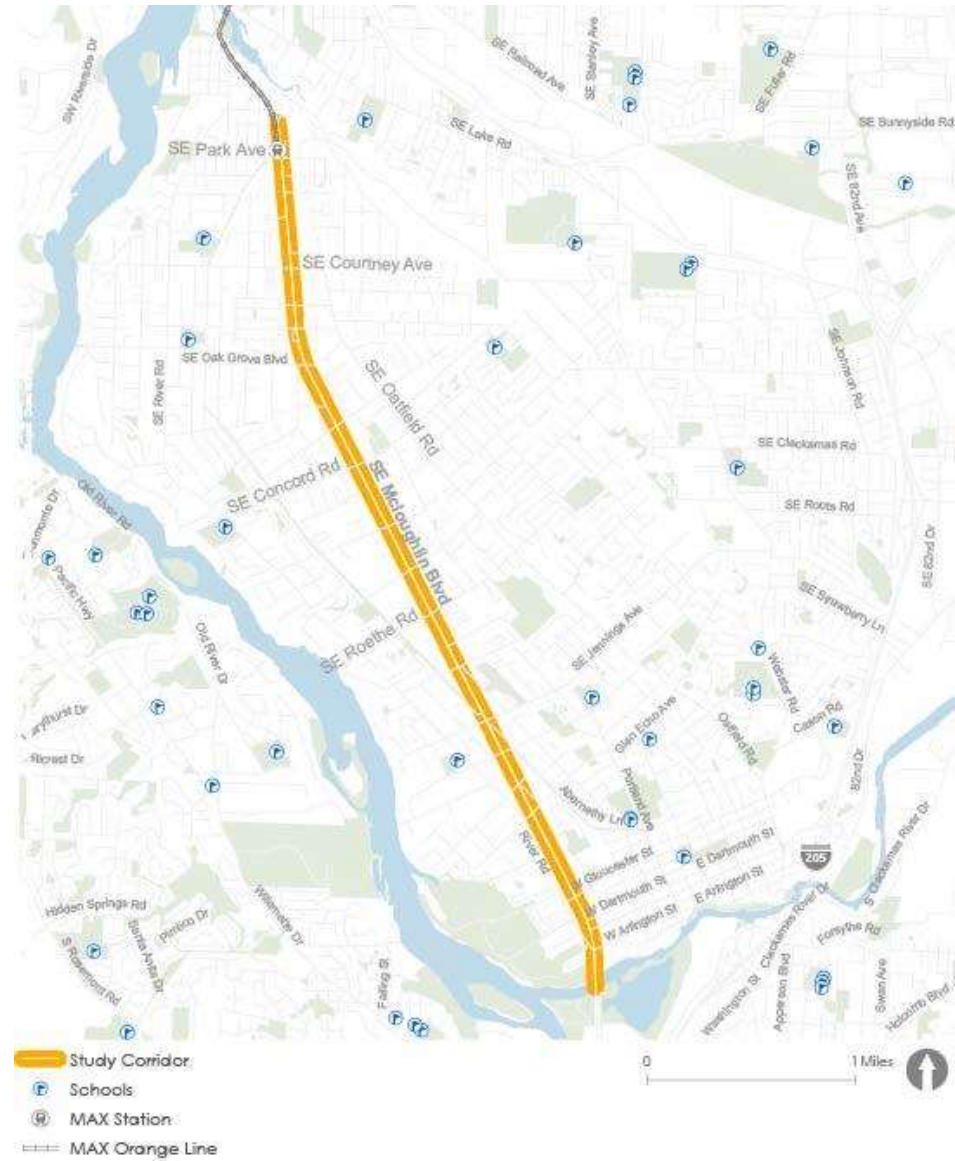
Identify **near-term improvements** (up to 10 years) **to address safety of people walking and biking as well as transit enhancements** on the corridor

Involve a cross section of stakeholders, **including traditionally underserved communities**, to inform community and investment priorities

Leverage recent work, momentum, and upcoming corridor investments

Study Area

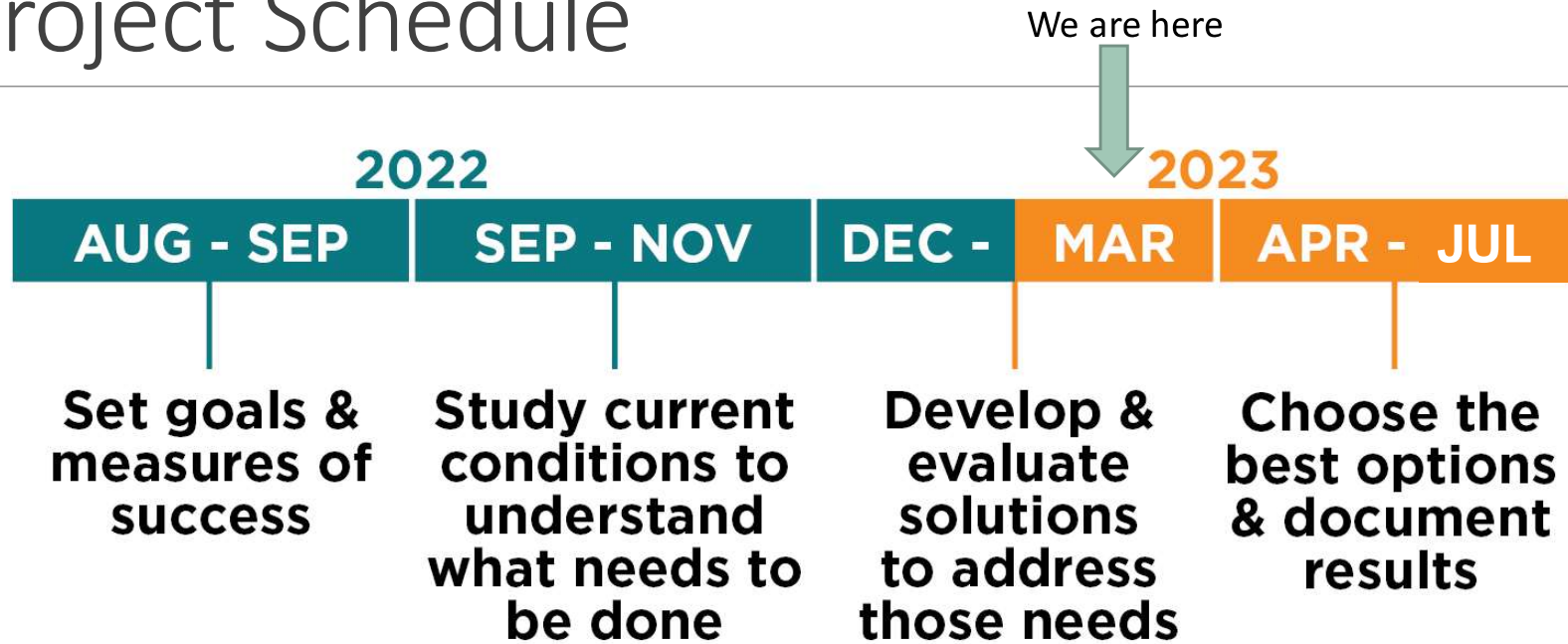
5-mile corridor between
Milwaukie and the Clackamas
River Bridge in Gladstone



Process



Project Schedule



Public Involvement & Outreach

Past

- Intercept/online survey at transit stops (October 2022)

Upcoming

- Oak Lodge Public Library – Wednesday, March 29th from 4-7 p.m.
 - Postcard notices to a one-half mile radius around the project area
 - Bilingual social media advertising campaign
- Good Roots Food Bank – Saturday, March 25th 8 – 10 a.m.
- Online Open House – March 20 -31st

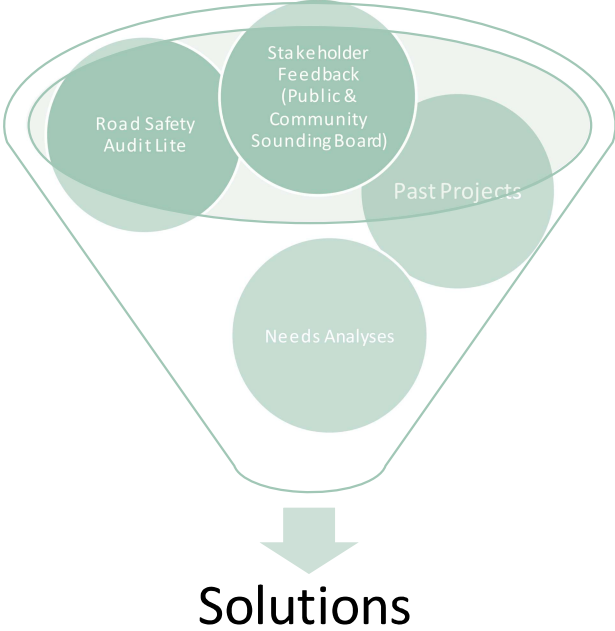
Post-events

- Send follow-up email blast (this summer) to interested parties after completion of the Investments Strategy

Public Involvement

Do you have other recommendations for outreach, especially to the low income, BIPOC, limited English proficiency, senior, and youth communities along the corridor?

Project List Development



Current Step: Evaluation

Evaluation Criteria	Description
Project Feasibility	The project has no major design feasibility concerns and minimizes cost relative to the project benefits. The project meets urban design guidance and criteria based on context, or would likely qualify for a reasonable design exception.
Community Support/Equity	The project receives positive support from community members. The project is located within an area with a high Transportation Disadvantaged Index.
Pedestrian and Bike Safety and Comfort (Combined)	The project improves pedestrian and bike comfort, reduces the frequency of fatal and severe injury crashes, improves connectivity, and encourages slower speeds, which reduces crash severity.
Quality of Transit Service and Access	The project reduces delay of transit service and improves pedestrian and/or bicycle comfort nearby a transit stop.

Current Step: Evaluation

	-1	0	+1	+2
Community Support/Equity	Project is controversial/not supported by the community	Project has neutral responses	Project is supported by the community	Project is strongly supported by the community

Project Types


- Pedestrian crossing improvements
- Transit improvement – e.g. reducing the amount of time buses are stopped in traffic
- Sidewalks – e.g. adding missing sections of sidewalk
- Pedestrian safety at signalized intersections – e.g. adjusting ped signal timing
- Bicycle facility improvements – e.g. adding buffer to bike lane
- Speed management treatments – e.g. speed feedback signs
- Other location specific improvements

Homework Results

Top Project Types (in order of support):

- Pedestrian safety at signalized intersections
- Sidewalks
- Pedestrian crossing improvements

Other Project Types:

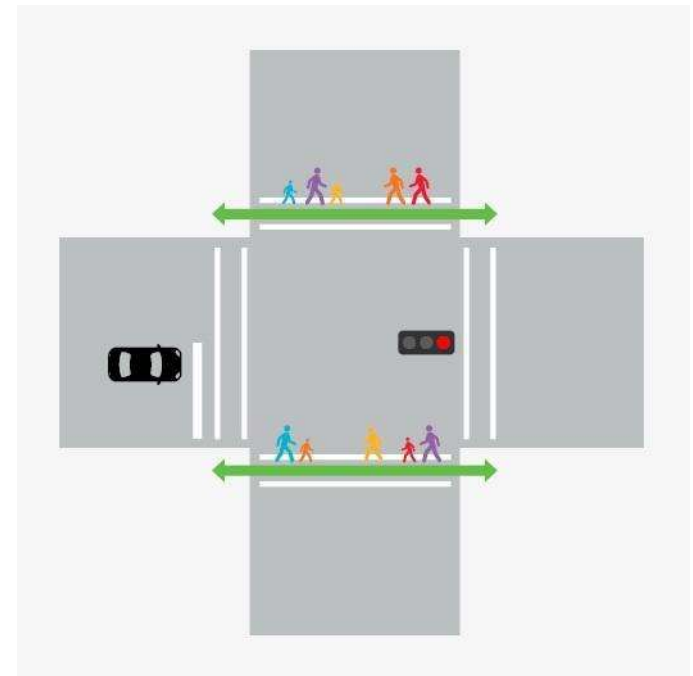
- Bicycle facility improvements
 - Speed management treatments
 - Transit improvement
- 

Project Types

Safety at Signalized Intersections

- Key projects include
 - Adding leading pedestrian intervals
 - Allowing people to walk before the lights turn green for cars
 - Protected left turns
 - No left turns allowed when the pedestrian push button is pushed
- Many have already been implemented on McLoughlin

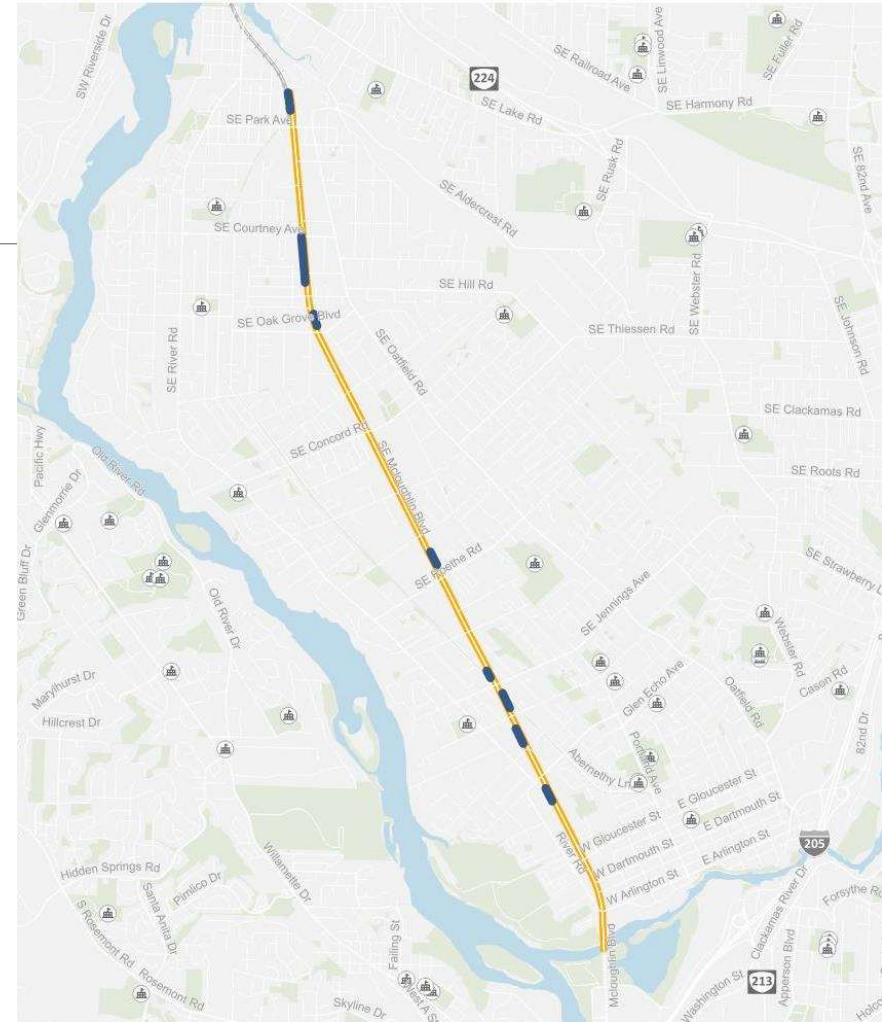
What are the key intersections of concern?



Fill in Missing Sidewalks

- Key sidewalk gaps:
 - South of Courtney Avenue
 - South of Jennings
 - South of Glen Echo Avenue

Which of these sidewalk gaps is highest priority?

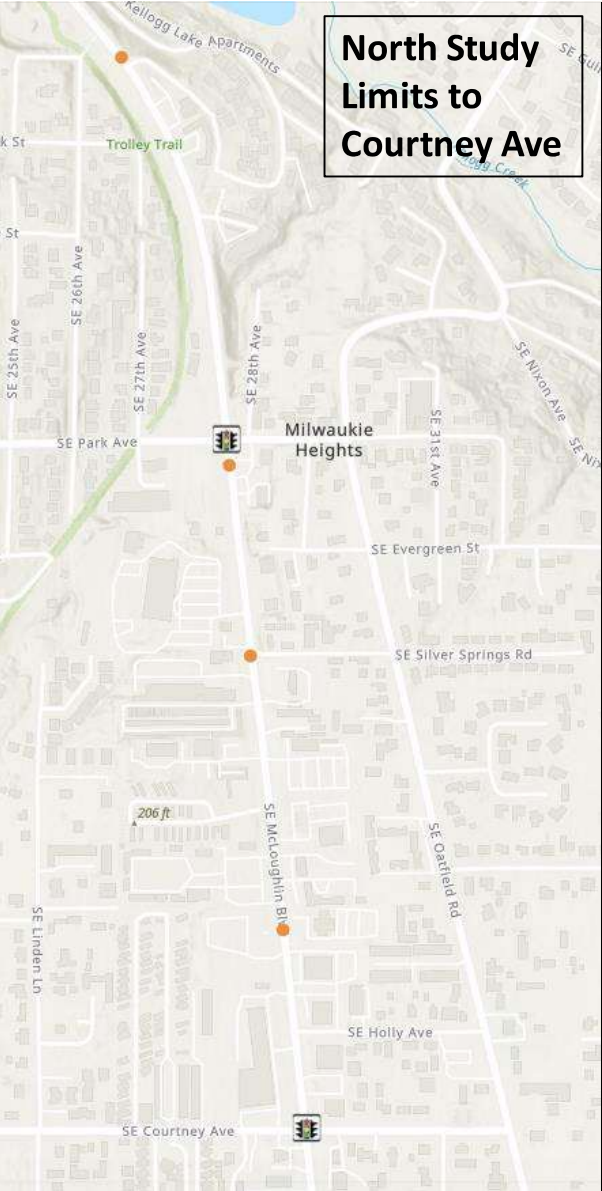


Project Types: Crossings

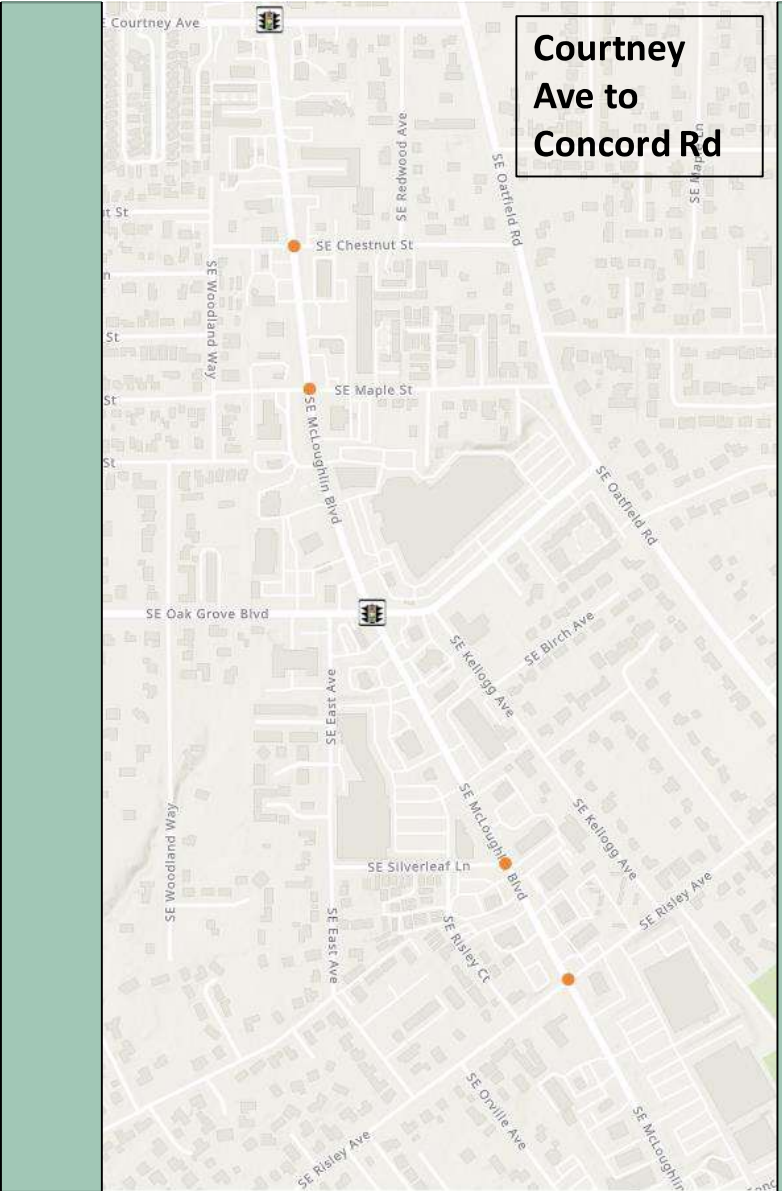
- Which 3 locations are more important for adding enhanced crossings?



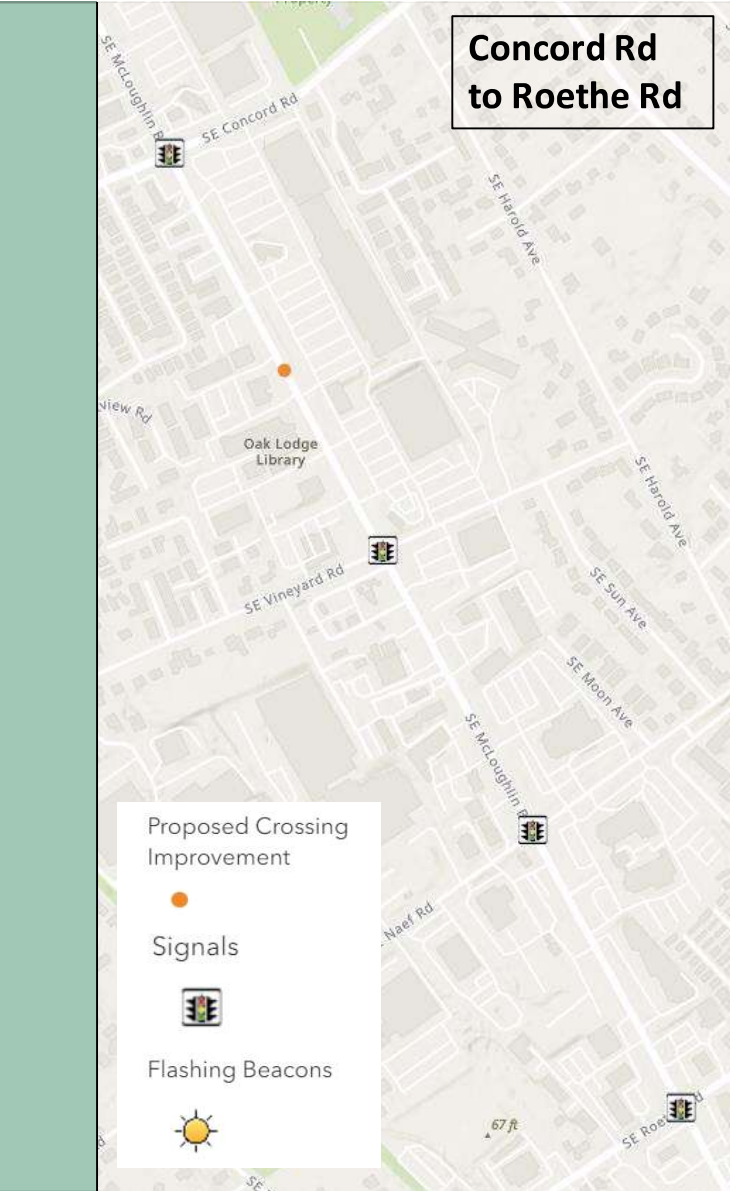
North Study Limits to Courtney Ave



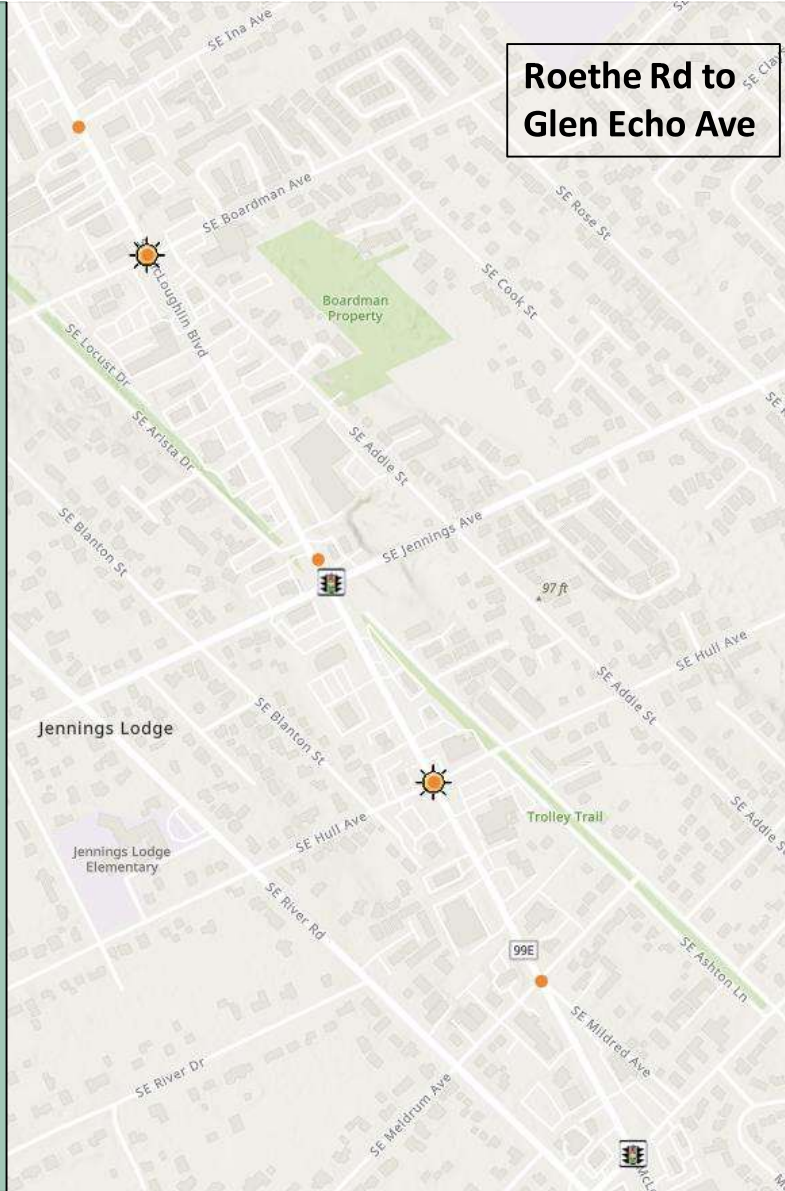
Courtney Ave to Concord Rd



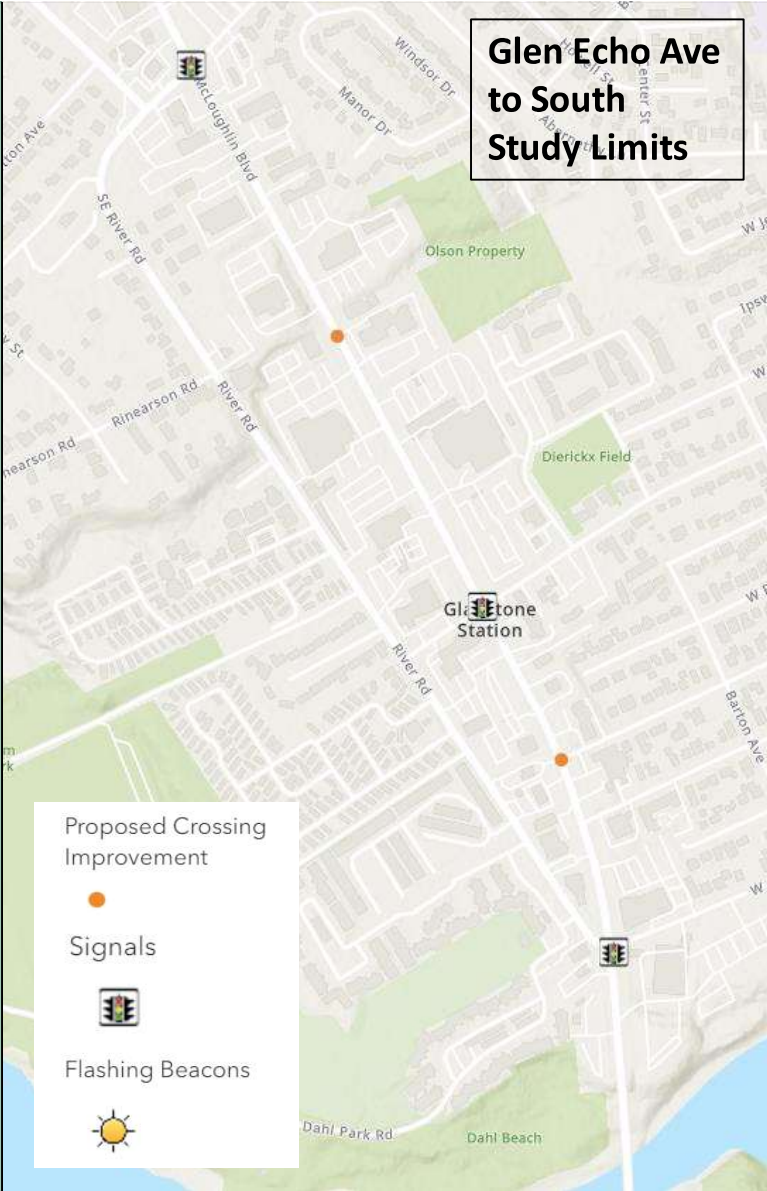
Concord Rd to Roethe Rd



Roethe Rd to Glen Echo Ave

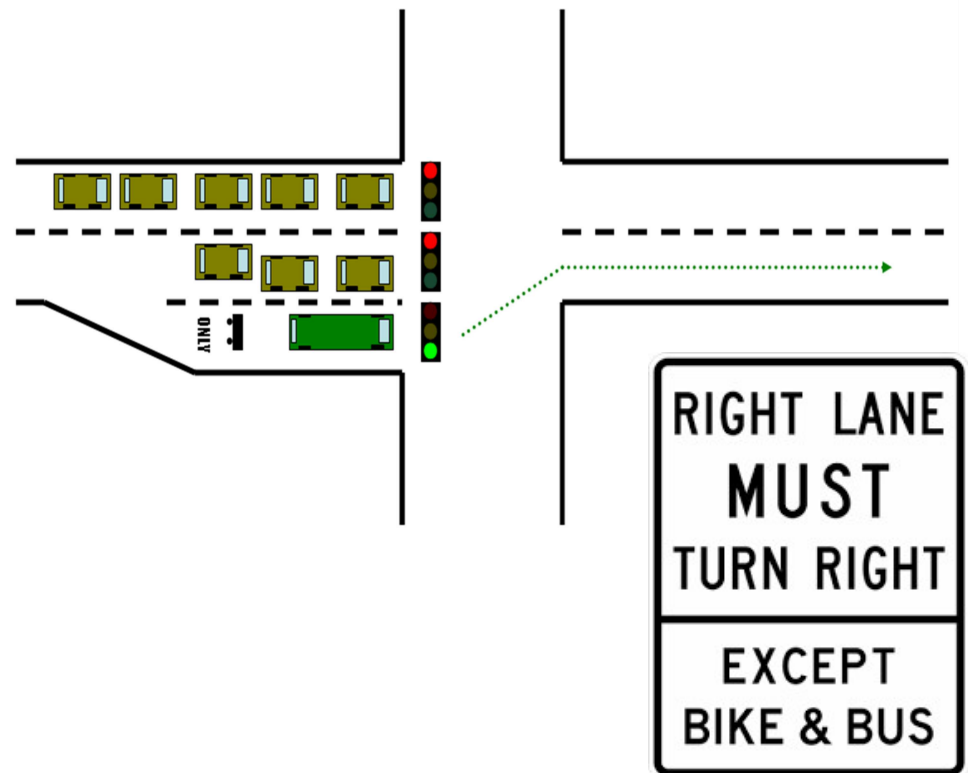


Glen Echo Ave to South Study Limits



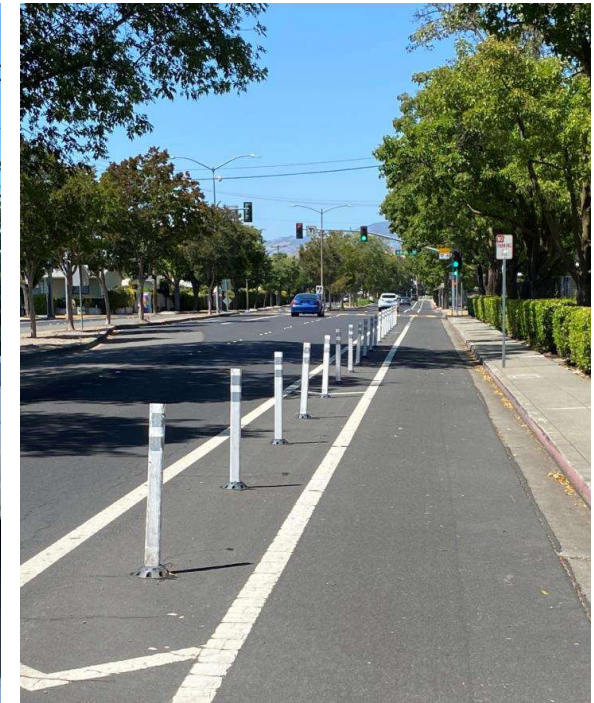
Key Transit Improvement Projects

- Queue jumps and pedestrian crossings at transit stops
- Queue jumps allow buses to bypass traffic at signalized intersections
- Queue jump locations being considered:
 - Courtney Avenue, Oak Grove Boulevard, Concord Road, Roethe Road
- Potential challenge: more costly at older intersections; may have tradeoffs for bicyclists



Bicycle Facility Improvements

- Step-wise approach:
 - Consistent bike lanes with wide buffer *first*
 - Adding vertical separation to the buffer *second*
- Implementation challenges:
 - Maintenance
 - Requires full restriping of corridor which may require repaving (costly)





Speed Management

- Many of our other projects act as speed management treatments (protected bike lanes, right turn lane removal)
- Other key projects include adding:
 - Medians north of Park Avenue
 - Speed feedback signs along the corridor

Do you have specific locations you recommend for speed feedback signs?


Other Projects

- Park Avenue right turn lane removal
 - Reduces crossing distance
- Trolley Trail crossing improvements
- Bicycle safety improvements at the Clackamas River Bridge



Which of these improvements feels most important?

Questions

- *Of all potential improvements we've discussed, **which are most important to you?***
 - *Are there **projects or challenges that we haven't discussed** that are important?*
- 

Next Steps

- Project Management Team's Project Evaluation
 - Use evaluation criteria
 - Identify a short list of prioritized projects
- Next/Final Community Sounding Board Meeting
 - May 2023 – We'll present the draft Investments Strategy, with prioritized projects

Staff Contact

- *Sandra Hikari, ODOT Project Manager | 971-281-4085 | Sandra.y.hikari@odot.gov*
- *Project website: TinyURL.com/ODOTMcLoughlinStrategy*